

CLAMPJOB®



WORKBENCH WITH DRAWER LOCKABLE CUPBOARD

MODEL NO: CWB57

PART NO: 7642010

ASSEMBLY INSTRUCTIONS



LS0115

INTRODUCTION

Thank you for purchasing this CLARKE product.

Before attempting to use this product, please read this manual thoroughly and follow the instructions carefully. In doing so you will ensure the safety of yourself and that of others around you, and you can look forward to your purchase giving you long and satisfactory service.

GUARANTEE

This product is guaranteed against faulty manufacture for a period of 12 months from the date of purchase. Please keep your receipt which will be required as proof of purchase.

This guarantee is invalid if the product is found to have been abused or tampered with in any way, or not used for the purpose for which it was intended.

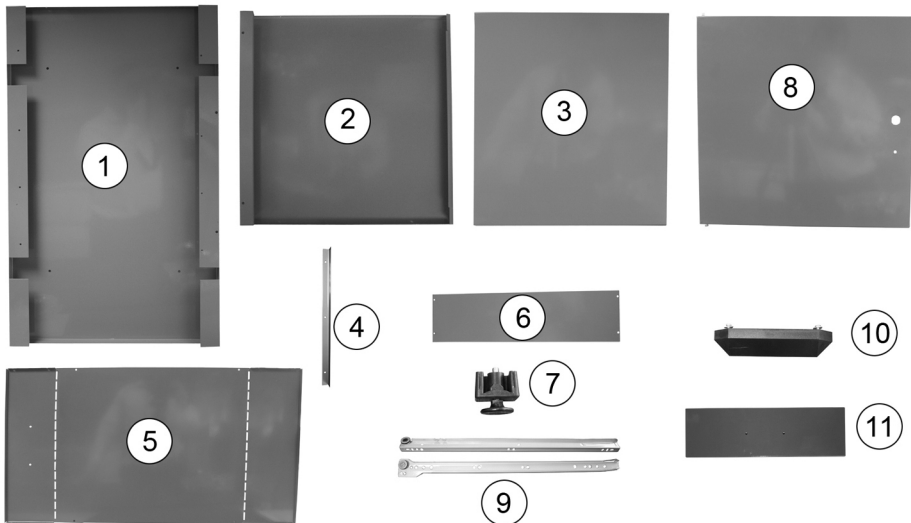
Faulty goods should be returned to their place of purchase, no product can be returned to us without prior permission.

This guarantee does not effect your statutory rights.

SPECIFICATION

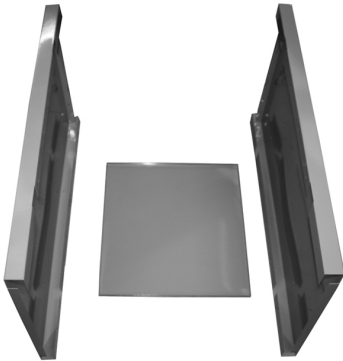
Dimensions (w x d x h)	570 x 600 x 870 mm
Weight (Empty)	23 kg
Maximum Load Per Drawer	10 kg
Maximum Load Total	60 kg

CONTENTS



No	Description	Qty
1	Side Panel	2
2	Top/Bottom Panel	2
3	Rear Panel	1
4	Door Jamb	1
5	Drawer Base	1
6	Drawer Sides	2
7	Feet	4
8	Door	1
9	Drawer Runners and Guides	2 sets
10	Drawer Handle	1
11	Red Drawer Front	1
12	Wooden Top (Not Shown)	1
13	Fixings kit 12 x M5x10 round head bolt set 19 x M4x8 flat head bolt set 4 x M6x25 hex head self tap screw set 1 x M5x8 round head bolt set 2 x M4x10 round head self tap screw set 1 x M6x16 hex socket cap screw set	

ASSEMBLY



1. Fit the two side panels (1) to the rear panel (3) as shown, use the fixings (large nuts and large bolts) supplied to secure in place.
2. Do not tighten fully at this stage.



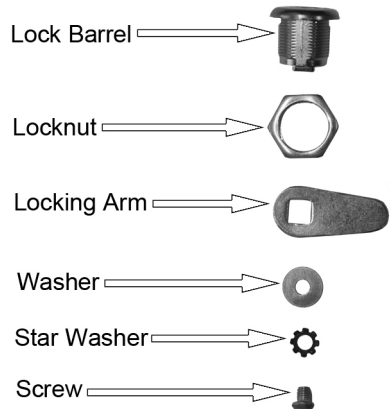
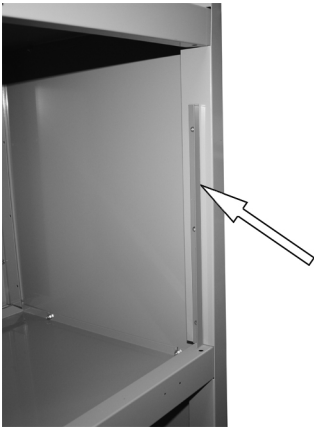
3. Insert the Bottom Panel (2) as shown and fix in place using the large nuts, large bolts and washers supplied.



4. Insert the Top Panel (2) as shown and fix in place using the large nuts, large bolts and washers supplied.



5. Place the door pin into the hole on the bottom panel as shown.
6. The allen screw, washer and nut supplied act as the second hinge pin, and must be fitted though the hole in the top panel.



7. Fit the door jamb (4) to the opposite side to the hinge pin.
8. Fully tighten all fixings.
9. If the lock is fitted to the door already, go to step 16.

10. Place the key in the lock and turn it so that the window on the front of the lock turns green.
11. Remove the screw and star washer from the rear of the lock.
12. Remove the washer and locking arm.
13. Remove the locknut from the lock barrel.



14. Insert the lock barrel with the green window at the top through the door and secure using the locknut as shown.



15. Replace the locking arm and washer and secure using the star washer and screw.

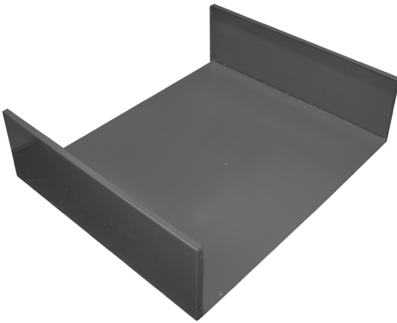


16. Fit one half of the drawer guides (9) into position as shown and use the small machine screws and nuts to secure in place.

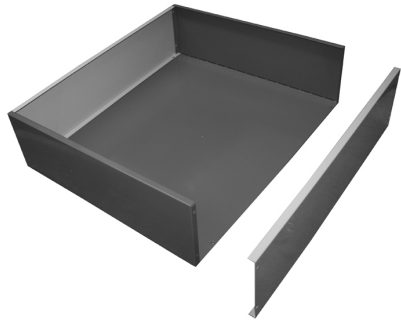


17. Fit the door knob.

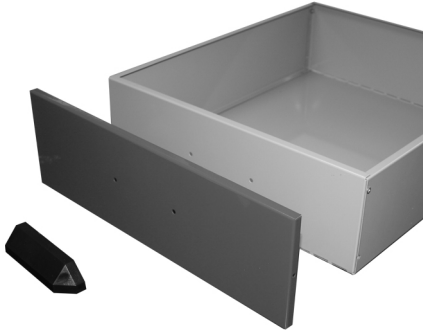
18. Fit the wooden top (12) to the workbench using the coach bolts and washers provided.



19. Fold up the ends of the drawer base (5) along the creases as shown.



20. Fit the drawer sides (6) and secure to the drawer base (5) using the small machine screws and nuts to secure.



Viewed from below



21. Fit the red drawer front (11) in place and attach the handle (10) to the drawer using the 2 screw supplied.

22. The drawer runners are marked (DR and DL), and must be fitted to the correct side of the drawer when viewed from the front and above the drawer, using the small machine screws and nuts

23. The right hand runner (DR) must be fitted as shown, note the runner overhangs the rear of the drawer slightly.

Viewed from below



24. The left hand runner (DL) must be fitted as shown, note the runner overhangs the rear of the drawer slightly.

25. Insert the drawer into the workbench.

26. Fit the feet (7) to the workbench.

A SELECTION FROM THE VAST RANGE OF

Clarke®

QUALITY PRODUCTS

AIR COMPRESSORS

From DIY to industrial, Plus air tools, spray guns and accessories.

GENERATORS

Prime duty or emergency standby for business, home and leisure.

POWER WASHERS

Hot and cold, electric and engine driven - we have what you need

WELDERS

Mig, Arc, Tig and Spot. From DIY to auto/industrial.

METALWORKING

Drills, grinders and saws for DIY and professional use.

WOODWORKING

Saws, sanders, lathes, mortisers and dust extraction.

HYDRAULICS

Cranes, body repair kits, transmission jacks for all types of workshop use.

WATER PUMPS

Submersible, electric and engine driven for DIY, agriculture and industry.

POWER TOOLS

Angle grinders, cordless drill sets, saws and sanders.

STARTERS/CHARGERS

All sizes for car and commercial use.



PARTS & SERVICE: 0208 988 7400

E-mail: Parts@clarkeinternational.com or Service@clarkeinternational.com

SALES: UK 01992 565333 or Export 00 44 (0)1992 565335

Clarke® INTERNATIONAL Hemnall Street, Epping, Essex CM16 4LG
www.clarkeinternational.com